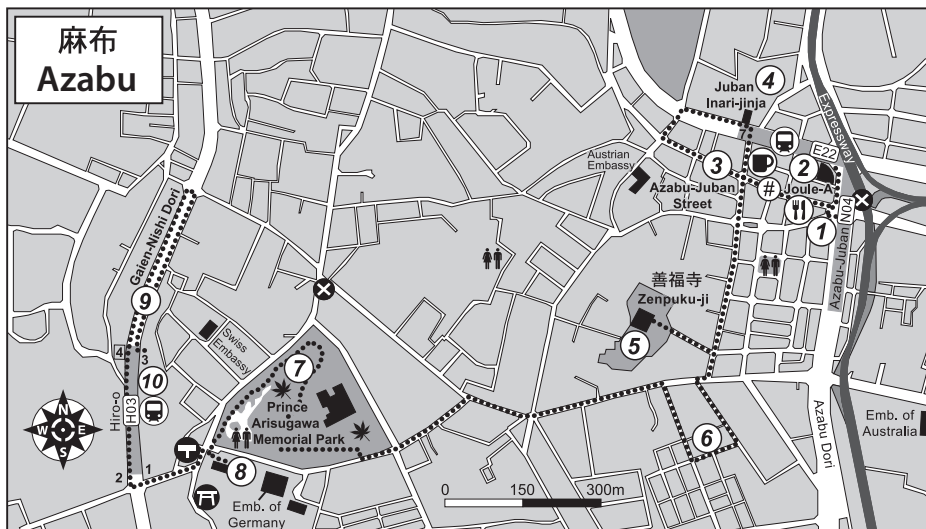


18. Strolling from Azabu to Hiro-o

Wed-Thu, Sat-Sun **5 km**



18.1 Azabu-Juban Station [N04, E22]

Two lines, Namboku and Toei-Odeo, intersect at **Azabu-Juban Station**. Leaving from **exit A4**, you enter the Azabu-Juban quarter.

18.2 Joule A Building

Right on the crossroads, a rather extraordinary building will catch your eye. Its façade, made of perforated aluminium plates, looks like it has been torn apart. The building was designed by architect **Edward Suzuki**, a Harvard graduate, and completed in the final phase of the economic boom.



Joule A Building

18.3 Azabu-Juban Street

A singular, almost rural atmosphere is to be found in tree-lined **Azabu-Juban Street**.

Here, Tokyo is not as crowded as it is in Shinjuku or Shibuya, and there is a pleasant mix of traditional and newer restaurants, and shops offering basically local food specialties, such as grilled eel, *taiyaki* (fish-shaped cakes filled with a sweet paste made out of beans) or soba noodles. www.azabujuban.or.jp



Azabu-Juban Street (#)

18.4 Juban-Inari Shrine ㊦

This small shrine is squeezed in between two houses. It is famous for its stone frog statue that is said to protect people against fire. According to legend, the frog once quenched a huge fire by using the water from a nearby pond. You can buy a talisman that is supposed offer its bearer such protection.

www.jubananinari.or.jp

03-3583-6250



Juban-Inari Shrine

18.5 Zenpuku-ji Temple

The antique temple **Zenpuku-ji** is famous for its 750-year-old ginkgo tree and for the grave of a famous sage and founder of Keio University, *Yukichi Fukuzawa*, whose portrait is depicted on the 10000 Yen bill.

After the opening of Japan, this temple was the residence of the American consul, *Townsend Harris*. In subsequent years, many other consulates and embassies have settled in the districts of Azabu and Hiro-o, including the **Australian Embassy**. Incidentally, you'll find the **British Embassy** marked on the map of Walk 21. The **US Embassy** is on that of Walk 2.

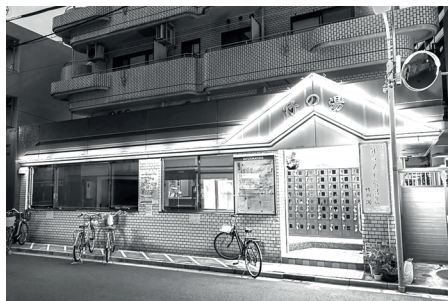
www.azabu-san.or.jp 03-3451-7402

18.6 Takeno-yu

This bath house with its own hot spring has been here for over 100 years. The water is blackish-brown in colour and is beneficial to your health. ① Tue-Thu and Sat-Sun 3:30pm-11pm, admission ¥520, towel rental ¥50/¥200.

#Tip: If you'd like to use the sauna, the total admission charge for 2 hours is ¥1000.

www.gomap.de/take 03-3453-1446



Takeno-yu

18.7 Prince Arisugawa Memorial Park

The **Prince Arisugawa Memorial Park** was once the Tokyo residence of this prince.

www.arisugawa-park.jp 03-3441-9642

The **Tokyo Metropolitan Central Library** is also located on the site. This reference library is open to the public and contains 160,000 non-Japanese books. ① Open Mon-Fri 10am-9pm, Sat-Sun 10am-5:30pm; closed each first Thursday and third Friday of the month.

www.library.metro.tokyo.jp 03-3442-8451

18.8 National Azabu Supermarket

The **National Azabu Supermarket** offers a great variety of foreign products, most notably a large selection of cheese, fruit, vegetables and spices that you would not find in any conventional Japanese supermarket. On the upper floor you can buy imported newspapers, magazines, books and gifts. ① 9am-8pm.

www.national-azabu.com 03-3442-3181

18.9 Gaien-Nishi Dori

The beginning of this road has already been described in Chapter 16. Its continuation near Hiro-o Station features some shops and restaurants that are worth visiting.

18.10 Hiro-o Station [H03]

You return by the Hibiya line. **Exit 3** and **4** are conveniently located at the north end; otherwise you may use **exits 1** and **2** at the southern end of **Hiro-o Station**.

#Coffee stop: Naniwaya Café

Traditional **taiyaki** has been made here since 1909, either queue up and buy one for ¥200 or enjoy a set menu with coffee upstairs (¥700).

① Minato-ku, 1-8-14 Azabujuban,

Wed-Mon 11am-7pm.

www.gomap.de/tnac 03-3583-4975

#Lunch break: Fukushima-ya

This place specialises in **oden**, a typical Japanese hotpot. It consists of boiled eggs, radish, fish cakes, konjac and other ingredients cooked in a light soy-flavoured dashi broth.

① Minato-ku, 2-1-1 Azabujuban,

Mon-Sun 11am-10pm.

www.gomap.de/tfuk 03-3451-6464